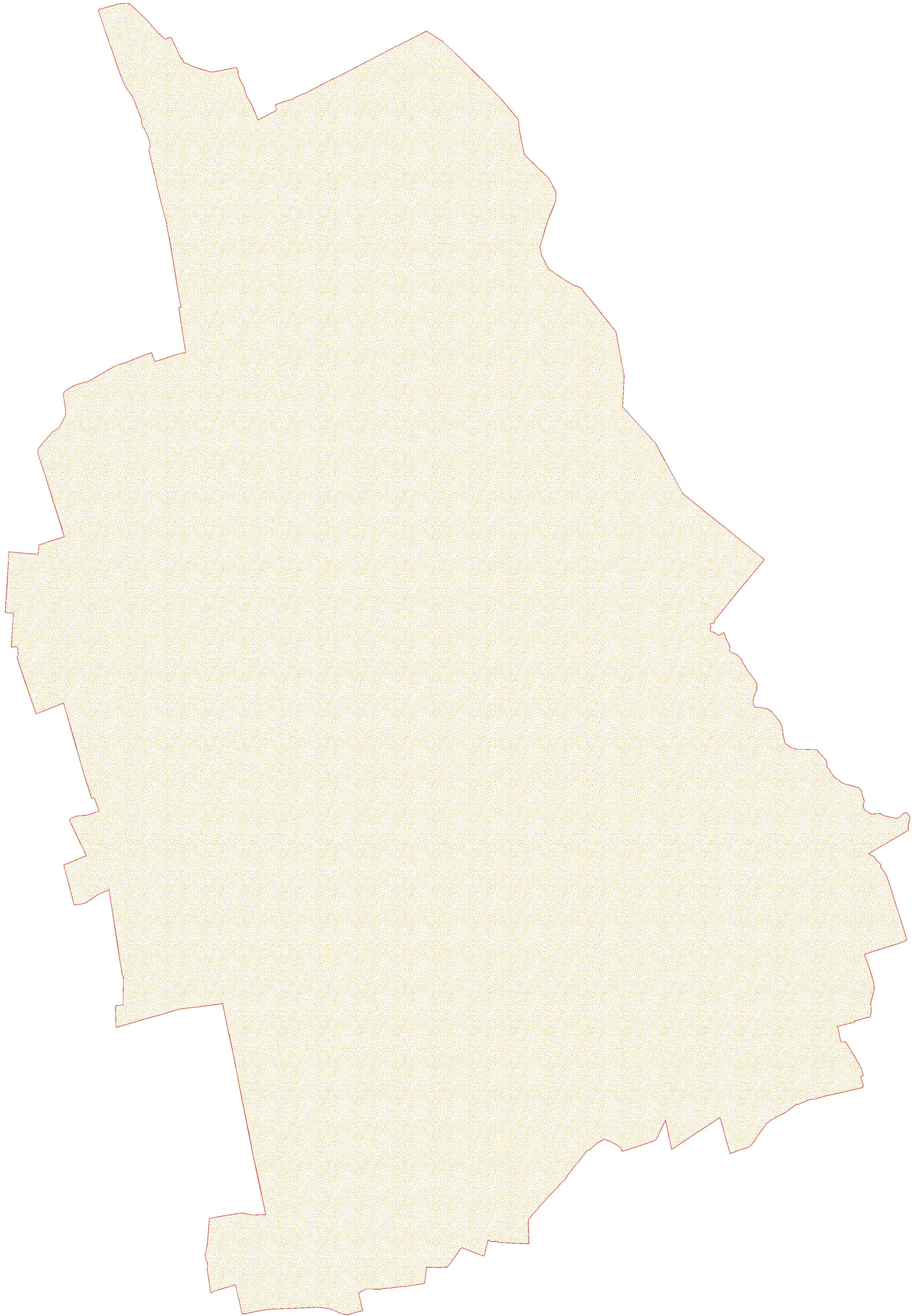


# Aree vulnerabili in relazione all'attività agricola



COMUNE DI CARMIGNANO DI BRENTA

Provincia di Padova

PAT

Elaborato

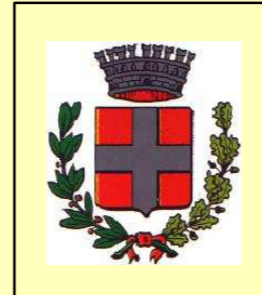
Tav.

4

6

Scala

1:10.000





Tecnico incaricato:  
BERTONI dott. GIULIANO

Settembre 2013



**AREE AGRO-AMBIENTALMENTE FRAGILI**

## Legenda

-  Aree vulnerabili ai nitrati di origine zootecnica
-  a0102011\_ConfiniComunali